

# Concrete Insulated or non-insulated wall Panels:

For a quick, durable and economical building, specify **Insulated or Non-Insulated Wall Panels**.

Prestressed concrete Wall Panels are ideal for structures that require low maintenance construction. The exterior surface is a smooth steel form finish that can withstand decades of weather exposure and work related abuse. Interior surface can be finished to accommodate a wide variety of uses. Broom finish and smooth trowel concrete surfaces offer bright and work friendly industrial interiors.

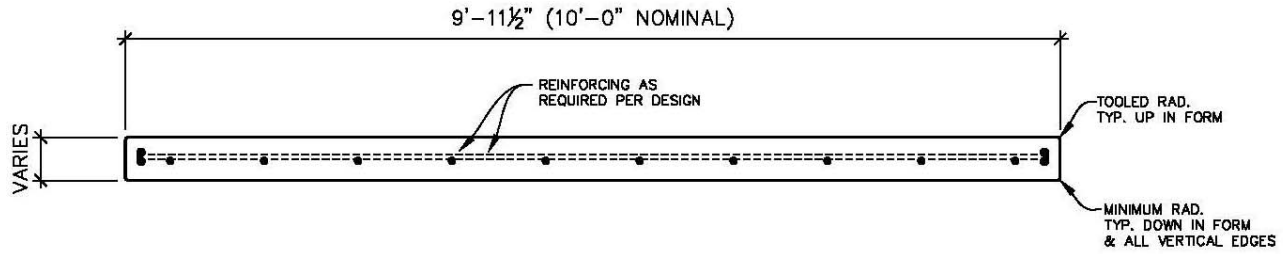
Concrete wall panels wall surfaces can also be painted as desired. Regardless of the use, Insulated or non-insulated walls provide the owner with low building operational cost. They offer excellent load carrying capability and can accommodate intermediate floor and long span roof loads.

Insulated or non-insulated wall panel systems are versatile. Moving a non-load bearing Insulated or non-insulated wall to a new location can be an economical solution to a future building addition. Hollow metal doorframes can be cast into the panels at our plant. Rough openings can also be provided for window and door installation at the job site.

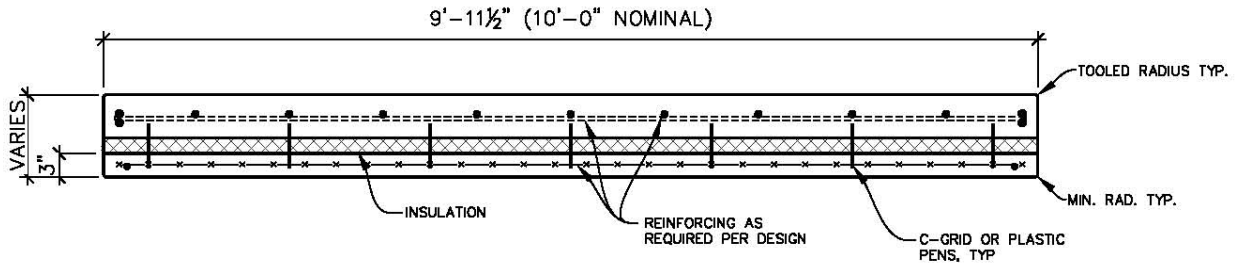
Insulated or non-insulated wall provide thermally efficient structures. Insulation values can vary from minimal thermal breaks to "R" values in the 30's. insulation can be expanded or extruded polystyrene in thickness up to 6 inches.

Consider an all-concrete structure. Insulated or non-insulated wall panels, used with double tees or hollow core floor and roof, provide a complete precast/prestress concrete building. Insulated or non-insulated wall structures are quick constructed and offer unsurpassed long term performance.





# Non-Insulated



# Insulated

\*Consult Oldcastle Precast for special design requirements and thickness.

