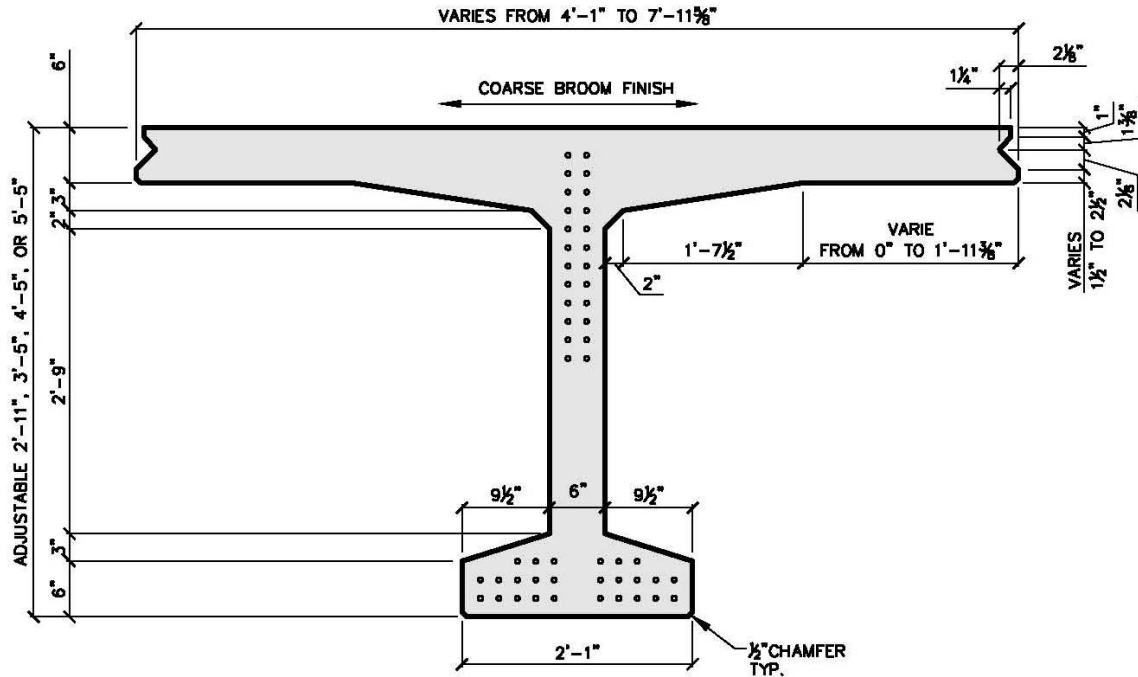


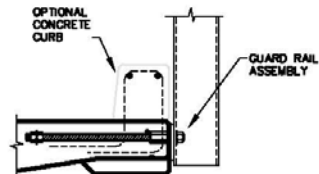
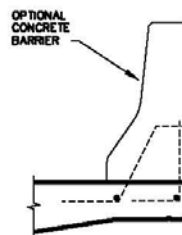
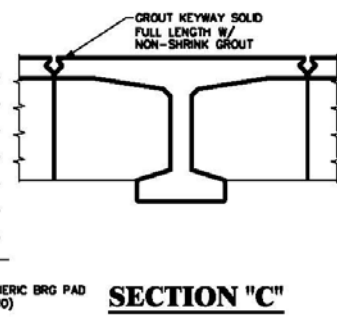
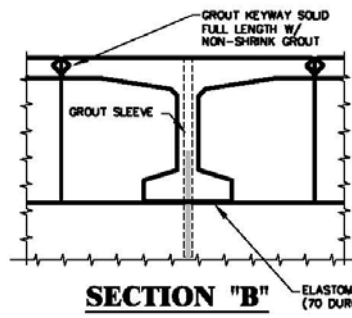
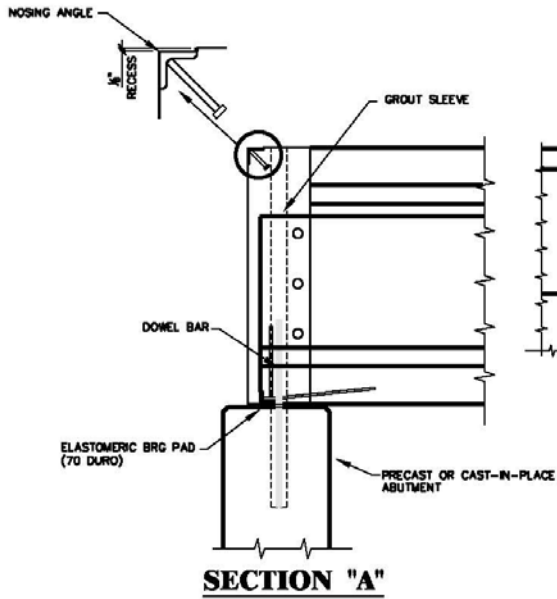
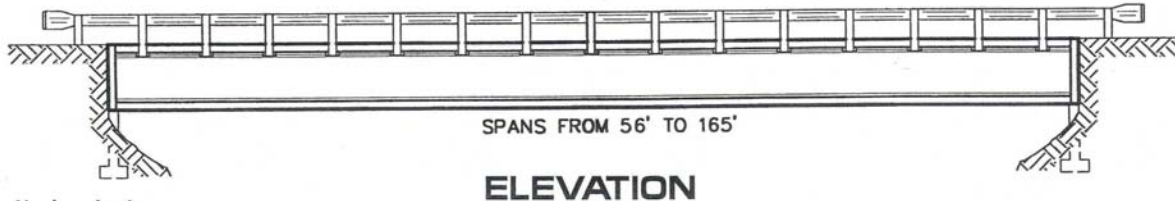
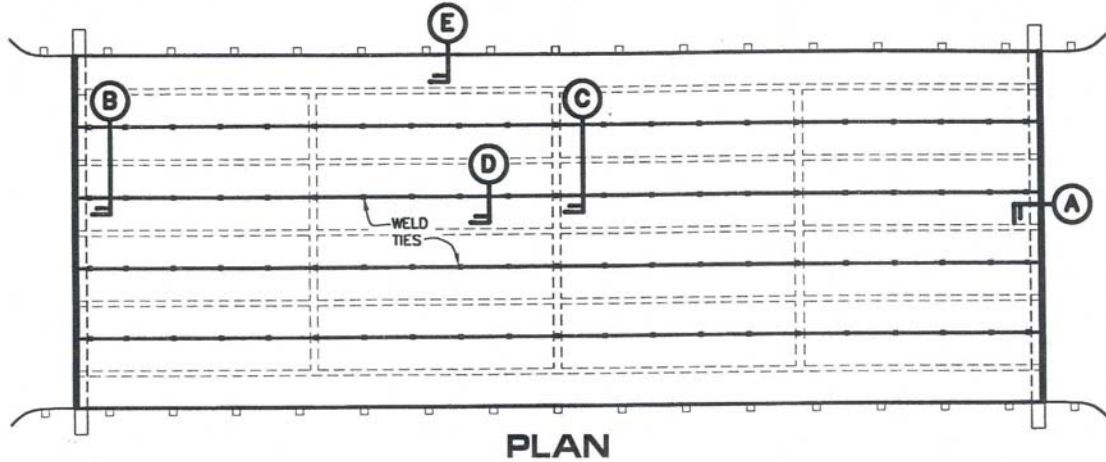
# Bulb Tee



## Section Properties

WIDTH		7'-11 1/8"	6'-11 1/8"	5'-11 1/8"	5'-6"	5'-0"	4'-9"	4'-4 1/4"	4'-1"	
DEPTH	5'-5"	Ag (in <sup>2</sup> )	1134	1062	990	957	921	903	876	853
		I (in <sup>4</sup> )	606,166	581,747	553,808	539,275	522,606	513,777	500,254	486,865
		Yb (in)	44.26	43.05	41.67	40.96	40.14	39.70	39.03	38.41
		WT (plf) ● 160 pcf	1260	1180	1100	1063	1023	1003	973	948
4'-5"	Ag (in <sup>2</sup> )	1062	990	918	885	849	831	804	781	
	I (in <sup>4</sup> )	363,257	348,884	332,290	323,594	313,564	308,226	300,019	292,502	
	Yb (in)	36.46	35.48	34.34	33.74	33.06	32.68	32.12	31.59	
	WT (plf) ● 160 pcf	1180	1100	1020	983	943	923	893	868	
3'-5"	Ag (in <sup>2</sup> )	990	918	846	812	777	758	732	709	
	I (in <sup>4</sup> )	189,985	181,618	173,035	168,502	163,242	160,427	156,082	151,212	
	Yb (in)	28.40	27.65	26.77	26.30	25.76	25.47	25.02	24.61	
	WT (plf) ● 160 pcf	1100	1020	940	902	863	842	813	788	
2'-11"	Ag (in <sup>2</sup> )	954	882	810	777	741	723	696	673	
	I (in <sup>4</sup> )	125,411	120,528	114,817	111,788	108,264	106,375	103,448	100,784	
	Yb (in)	24.26	23.63	22.88	22.49	22.02	21.78	21.40	21.03	
	WT (plf) ● 160 pcf	1060	980	900	864	823	803	773	748	

# Bulb Tee



SECTION "E"

